

Nissan NATS 4 and 5 Emulator

Red Cable: +12V

Green Cable: CODE

White Cable: CAN-L

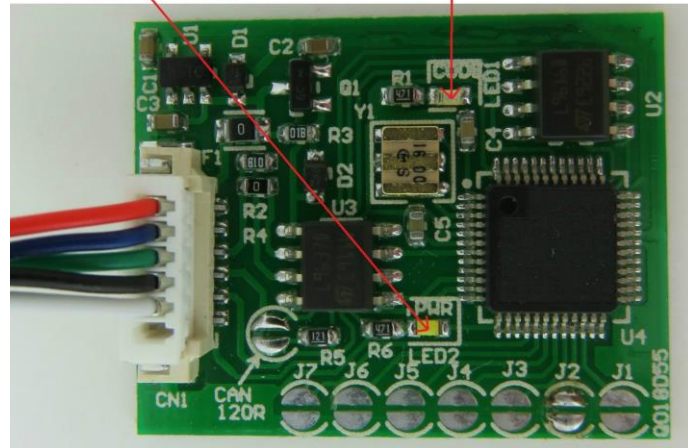
Blue Cable: GND

Black Cable: CAN-H

After adjusting,
LED-- It lights up constantly,
and blink every two seconds

LED-- Power

In Universal Emulator
solder jumpers **J2, J3 and J4**



USE

ECU from 2000 to 2002 - NATS 4 and 5 immo

2.2 2.7 diesel 5-socket ECU with 24C04 memory

1.5 gasoline Hitachi MEC with 93C46 and 93C56 memory

1.8 and 2.0 gasoline Hitachi MEC with 93C56 memory

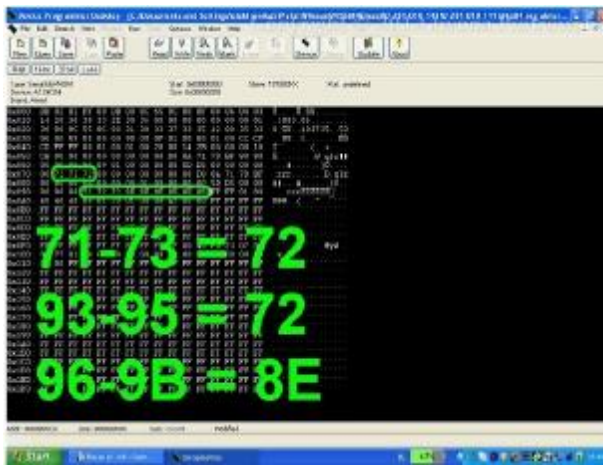
1.4 gasoline Bosch with 24LC02 memory

Models: Almera, Almera Tino, Micra, Primera, Terrano

2.2 2.7 diesel 5-socket ECU with 24C04 memory



Find **24C04** eeprom memory



In addresses

from **071** to **073** write **72** value

from **093** to **095** write **72** value

from **096** to **09B** write **8E** value

Connecting emulator to ECU



2.7 diesel 5-socket ECU with 24C04 memory



In addresses
from **0AC** to **AE** write **72** values
in **0CF** write **72** value
from **0D0** to **0D7** write **72 72 8E 8E 8E**
8E 8E 8E values

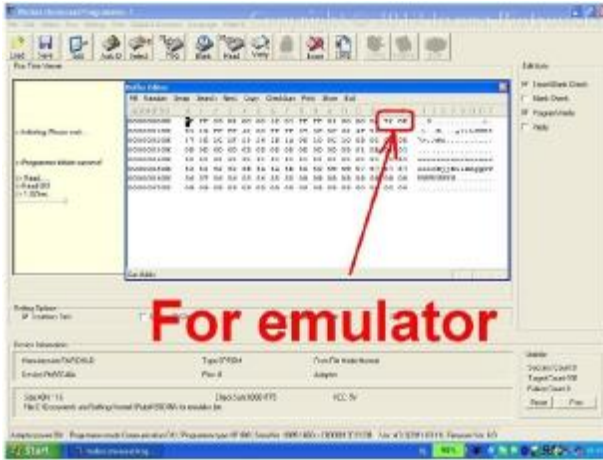
Connecting emulator to ECU



1.5 gasoline Hitachi MEC with 93C46 memory



Find **93C46** eeprom memory



In address
from 00E to 00F write 72 8E or 8E 72
values

Connecting emulator to ECU

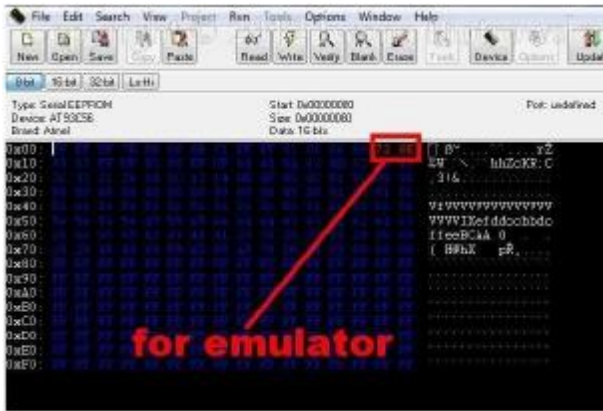
- +12V ACC 43 pin**
- GND 108 pin**
- Code 116 pin**
cut off from the plug in ECU



1.5 1.8 2.0 gasoline Hitachi MEC with 93C56 memory



Find **93C56** eeprom memory



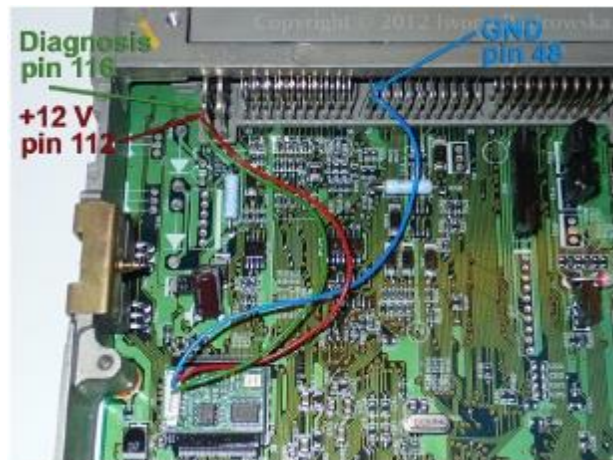
In address
from **00E** to **00F** write **72 8E** or **8E 72**
values

Connecting emulator to ECU



Connecting emulator to ECU for Nissan Primera 2001

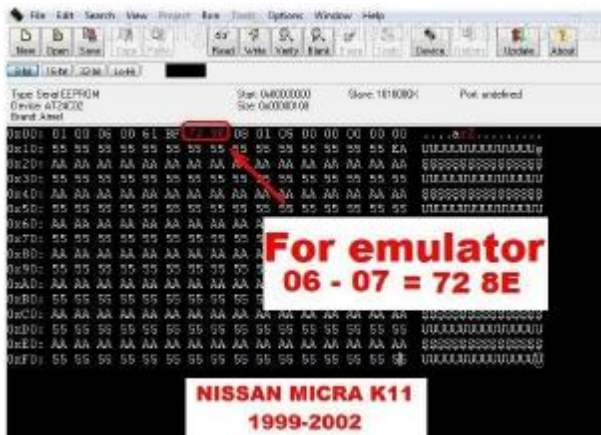
2.0 16V 140PS



1.4 gasoline Bosch ECU with 24LC02 memory



Find **B58253** eeprom memory - read as **24C02**



In address
from **06** to **07** write **72 8E** values

BLAUPUNKT 9345 radio with 25160 memory

Upload memory content ([available HERE](#)) and connect up the radio, wait out the countdown of 50 seconds. Then when CODE shows up please enter code **8361** and confirm with UP ARROW button

Important!

When you enter incorrect code, it will cause the radio lock to turn on for 50 minutes



CLARION PN-1628M radio with f93C46 memory

Upload memory content ([available HERE](#)) and connect up the radio, wait out the countdown of 50seconds. Then when CODE shows up please enter code **1111** and confirm with UP ARROW button.



Warning!!!

Due to possible construction changes of cars, check signals with multimeter in the ECU plug