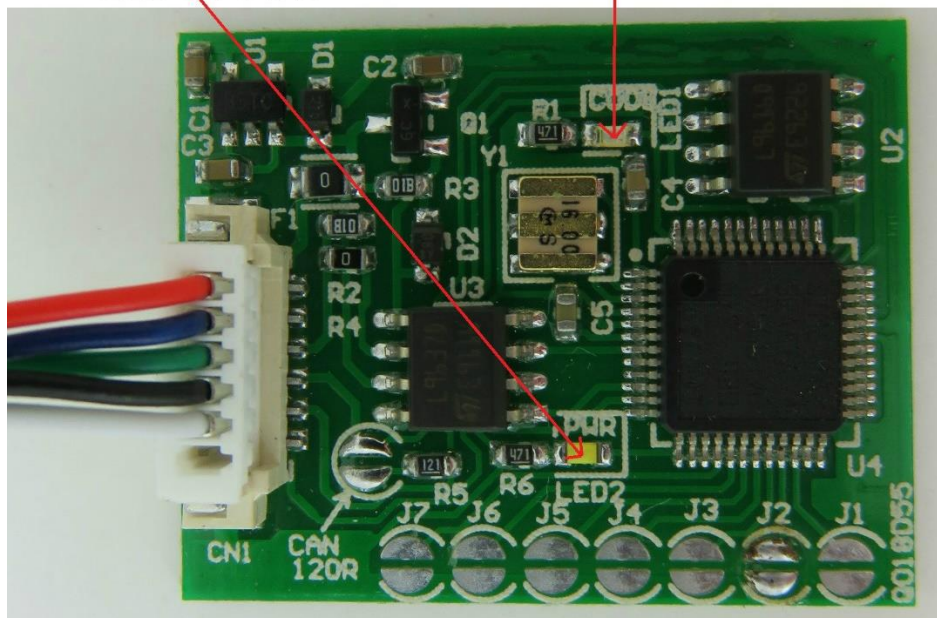


Citroen, Peugeot with CAN

IMMO Emulator

Red Cable: +12V **Blue Cable: GND**
Green Cable: CODE **Black Cable: CAN-H**
White Cable: CAN-L

LED-- Power After adjusting,
LED-- It lights up constantly,
and blink every two seconds



Citroen, Peugeot with CAN
In Universal Emulator, solder jumpers J1, J2, and J5

USE

EDC16 1.4 1.6 HDI with CAN

EDC15 HDI with CAN

EDC16 ECUs with CAN

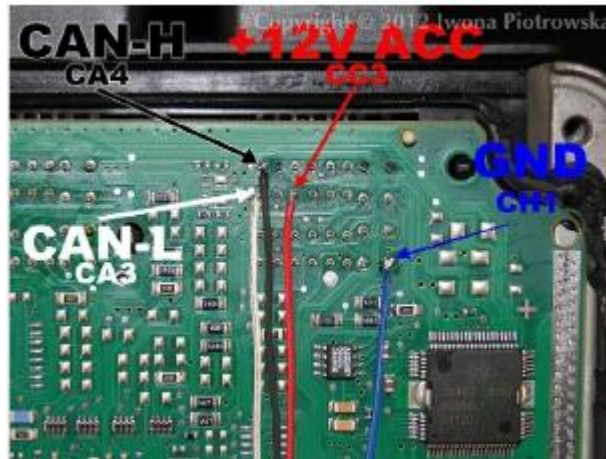
1.4 HDI and 1.6 HDI



This emulator requires modification of **95160** or **95320** memory in addresses:

060	B6 F3 B2 30 01 04 FD 40
080	82 92 17 04 54 38 FD E4
0A0	97 E1 A6 36 AB C7 FB F8
860	B6 F3 B2 30 01 04 FD 40
880	82 92 17 04 54 38 FD E4
8A0	97 E1 A6 36 AB C7 FB F8
1060	B6 F3 B2 30 01 04 FD 40
1080	82 92 17 04 54 38 FD E4
10A0	97 E1 A6 36 AB C7 FB F8
1860	B6 F3 B2 30 01 04 FD 40
1880	82 92 17 04 54 38 FD E4
18A0	97 E1 A6 36 AB C7 FB F8

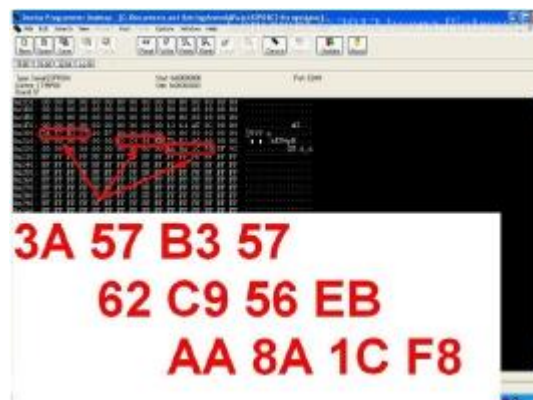
Connecting emulator to ECU



EDC15 HDI with CAN



This emulator requires modification of **5P08C3** memory in addresses shown below:



In 200-203 values write:

3A 57 B3 57

In 216-219 values write:

62 C9 56 EB

In 22A-22D values write:

AA 8A 1C F8

Connecting emulator to ECU



Warning!!!

Due to possible construction changes of cars, check signals with multimeter in the ECU plug.