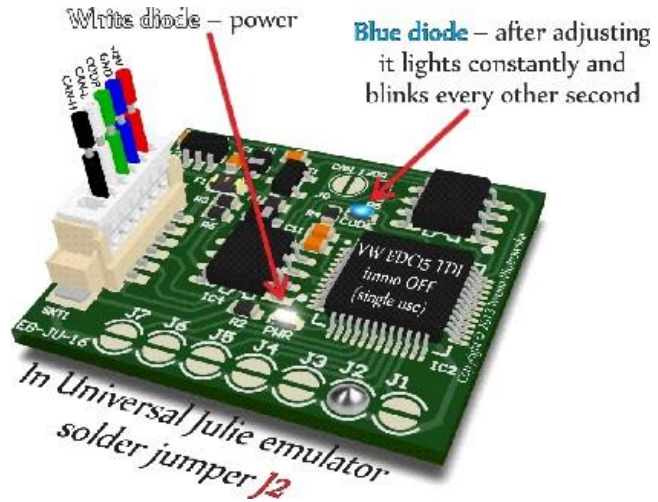


VW EDC15 IMMO EMULATOR

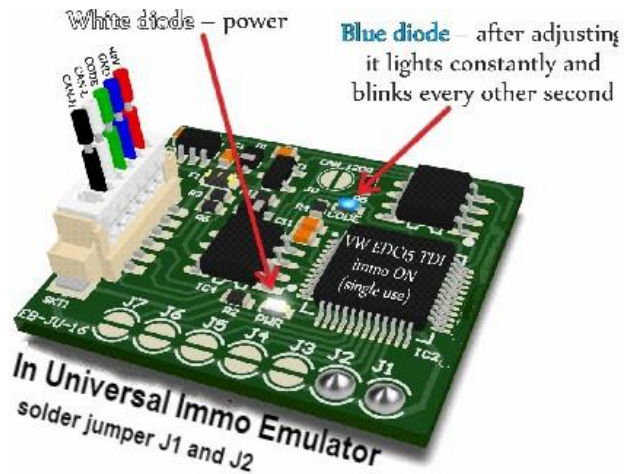
VW EDC15 immo OFF (single use)

In Universal Immo Emulator,
Solder Jumper **J2**



VW EDC15 immo ON (single use)

In Universal Immo Emulator,
Solder Jumper **J1 and J2**



This emulator replaces damaged immobiliser, instrument cluster or a car key.
Immo gets removed once the emulator is connected to the OBD socket.
In the case of losing car keys or car theft, you will be able to drive to the nearest car garage

USE

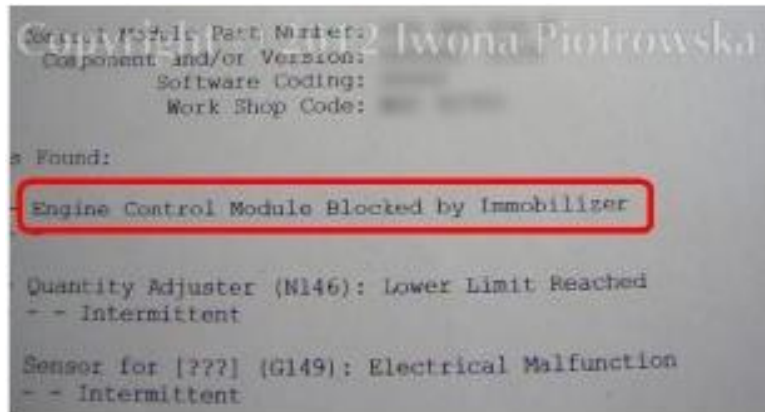
VW EDC15 immo emulator – W2 and W3 systems, diesel engines from 2000 to 2004, some to 2006, and even 2008 (except Audi with coded pump)

Program selection is effected by proper soldering of jumpers
Suitable for vehicles with 2-socket ECUs



Engine capacity

1.2 TDI 1.4 TDI 1.9 TDI 2.5 TDI



Before using the emulator, check if there is a connection between ECU and OBD2

You can use a VW EDC15 emulator in the following situations

When getting an **Engine Control Module Blocked by Immobiliser** fault when making connection with ECU with a diagnostic interface or if your car starts and then dies

16-pin OBD2 socket

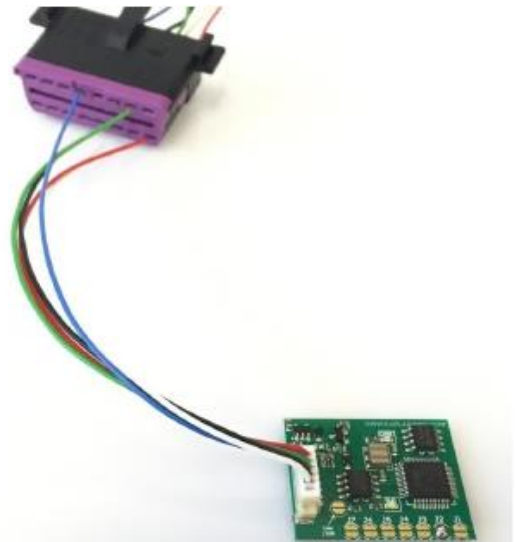


Connect all the wires to the OBD2 socket

2. TURN IGNITION ON AND WAIT 20 SECONDS

3. When ignition is turned on, connect the emulator's plug to the emulator's PCB. Once connected, the blue LED flashes fast and after several seconds the LED should emit a constant light and blink every other second.

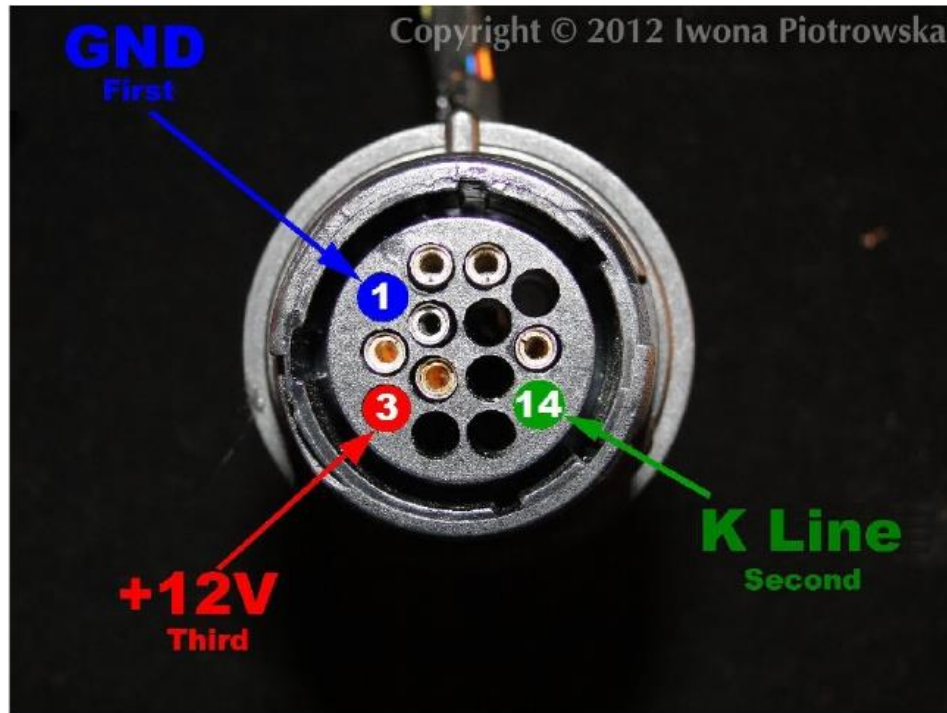
4. Turn ignition OFF and disconnect emulator.



VW EDC15 emulator does not remove immo due to a program change to flash memory in ECU:

EDC15 Audi A6 2.5 TDI V6 2003
8E0 907 401 M 0 281 011 255

14-pin socket in LT



Fitting procedure of emulator is the same as for the OBD2 socket

Warning!!!

Due to possible construction changes of cars ,
check signals with multimeter in the ECU plug.