



# SENSOR OCCUPANT EMULATOR

distribution by **EcuVonix Solutions**



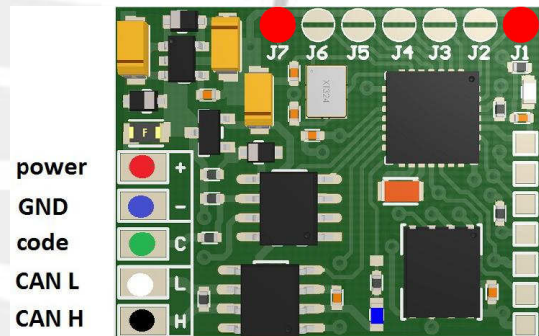
# Setting the emulator

## BMW Europe up to 2007 to 2010

- E60, E63, E64, E65
- E70, E71
- E81
- E90, E92, E93

without installed child restraint

**Close Jumper J7 + J1**

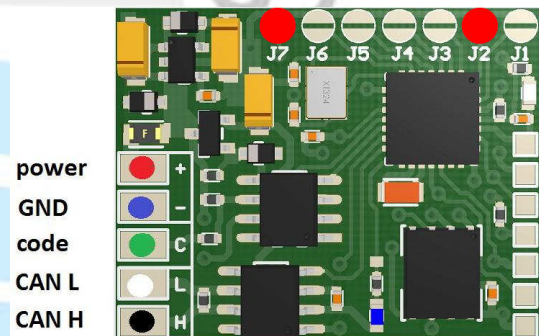


## Mercedes

- E-class W211 (2002-2004 year) with controller airbag Temic,

- S-class W220 (2003-2005 year) without installed child restraint

**Close Jumper J7 + J2**



Instruction pag. 9

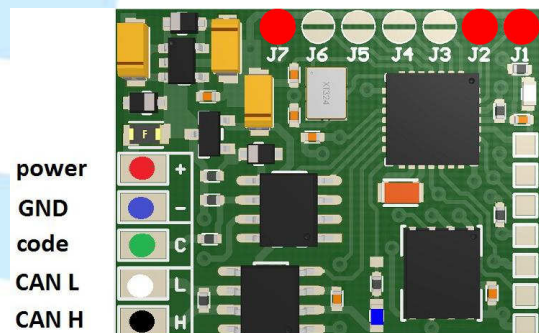
## Mercedes

- E-class W211 (2002-2004 year) with controller airbag Temic,

- S-class W220 (2003-2005 year)

with installed child restraint

**Close Jumper J7 + J2 + J1**

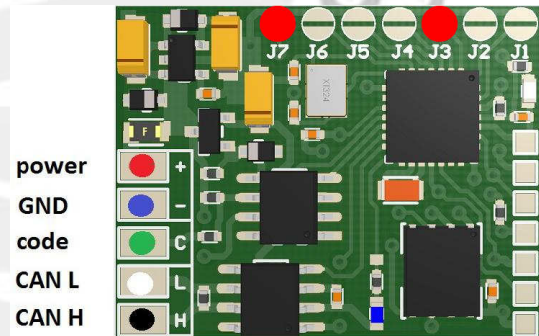


Instruction pag. 9

### Mercedes

- A-class W168 (1997-2001 year)
- C-class W202 (1999-2001 year),
- VitoW638 to 2003 year,
- ML with controller airbag TRW 1999 year,
- E W210 to 1999 year, before lifting indicator airbag Off

without installed child restraint



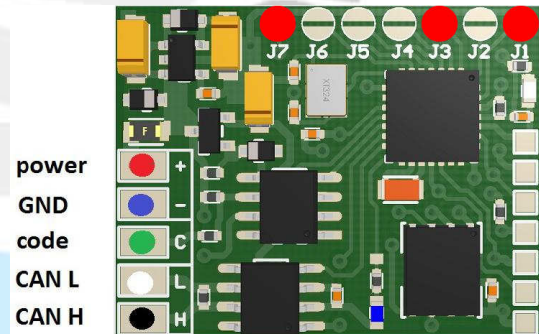
### Close Jumper J7 + J3

Istruction pag. 10

### Mercedes

- A-class W168 (1997-2001 year)
- Class W202 (1999-2001 year),
- Vito W638 to 2003 year,
- ML with controller airbag TRW 1999 year,
- E W210 to 1999 year, before lifting indicator Airbag Off

with installed child restraint



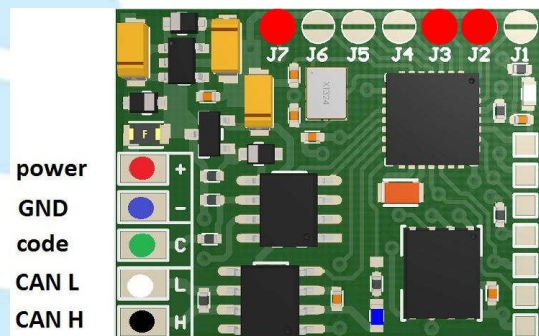
### Close Jumper J7 + J3 + J1

Istruction pag. 10

### Mercedes

- W210 (2000-2003 year) with indicator Airbag Off
- E-class,
- Vito W639 (2002-2005 year),
- ML W163 as of 2000 year,
- A-class W168 (2002-2005 year)
- S-class W220 (2000-2003 year),
- C-class W203 to 2005 year,
- CLK W209,
- Vaneo

without installed child restraint



### Close Jumper J7 + J3 + J2

Istruction pag. 11

## Mercedes

- E-class with indicator Airbag Off,
- W210 (2000-2003 year),
- Vito W639 (2002-2005 year),
- ML W163 as of 2000 year,
- A-class W168 (2002-2005 year)
- S-class W220 (2000-2003 year),
- C-class W203 to 2005 year,
- CLK W209,
- Vaneo

with installed child restraint

**Close Jumper J7 + J3 + J2 + J1**

Istruction pag. 11

## BMW

Europe as of 1997 to 2007 year

- E31, E36, E39, E39
- E46
- E53

Models form 2003 to 2007

- E60, E63, E65
- E87, E90

without installed child restraint

**Close Jumper J7 + J4**

Istruction pag. 12

## BMW

Europe as of 1997 to 2007 year

- E31, E36, E39, E39
- E46
- E53

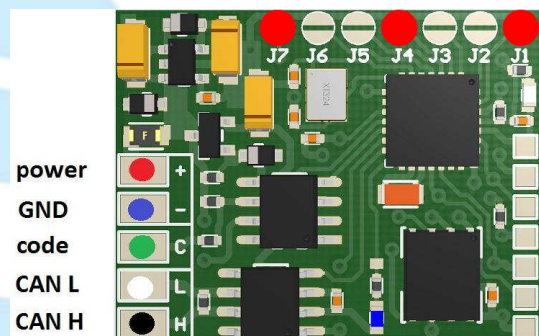
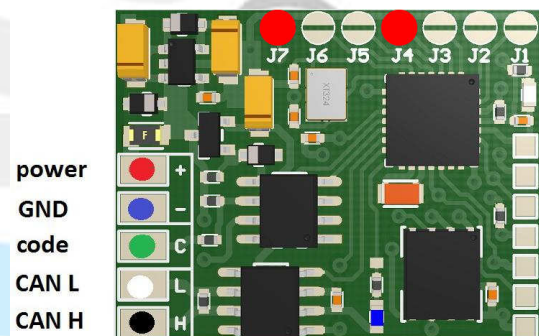
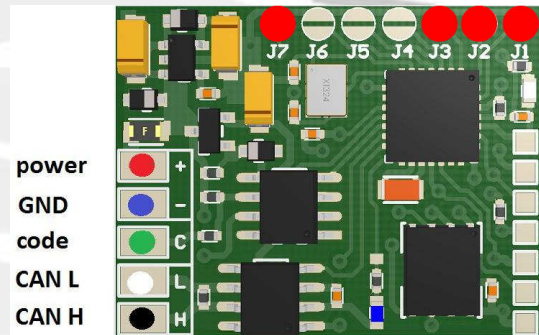
Models form 2003 to 2007

- E60, E63, E65
- E87, E90

with installed child restraint

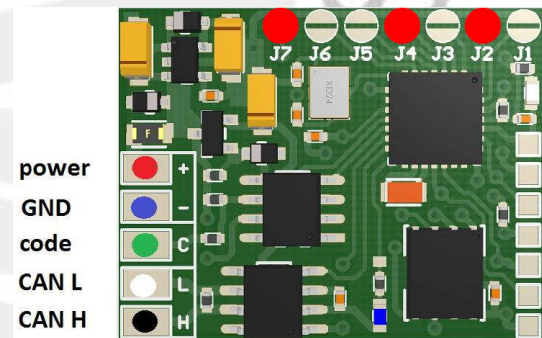
**Close Jumper J7 + J4 + J1**

Istruction pag. 13



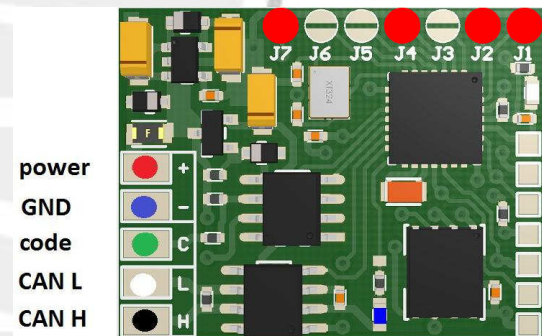
**Mini Cooper 2002-2005 year  
without installed child restraint**

**Close Jumper J7 + J4 + J2**



**Mini Cooper 2002-2005 year  
with installed child restraint**

**Close Jumper J7 + J4 + J2 + J1**

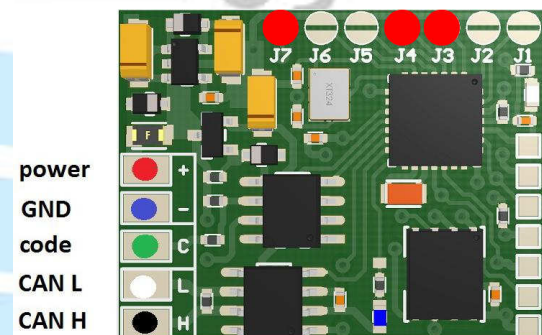


**Mazda**

- Premacy,
- MX-5,
- 626,
- 323,
- 6

**without installed child restraint**

**Close Jumper J7 + J4 + J3**



Instruction pag. 14

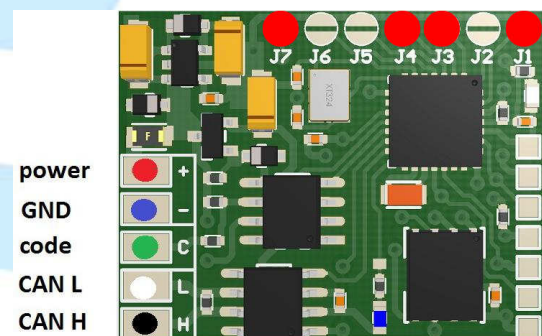
**Mazda**

- Premacy,
- MX-5,
- 626,
- 323,
- 6

**with installed child restraint**

**Close Jumper J7 + J4 + J3 + J1**

Instruction pag. 14



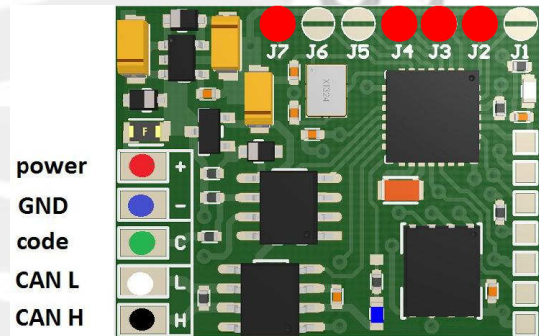
## Fiat

- Stilo

without installed child restraint

**Close Jumper J7 + J4 + J3 + J2**

Istruction pag. 15



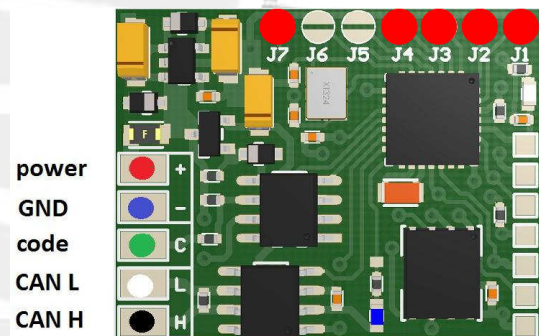
## Fiat

- Stilo

with installed child restraint

**Close Jumper J7 + J4 + J3 + J2 + J1**

Istruction pag. 15

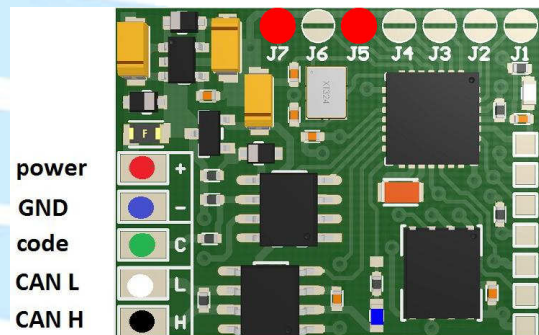


## Mercedes

**→ Only the version V5.3**

- E-class W211 from 2004 to 2007 (only Temic)
- SL W230 model 2004 only
- SLK W171 from 2004 to 2011

**Close Jumper J7 + J5**

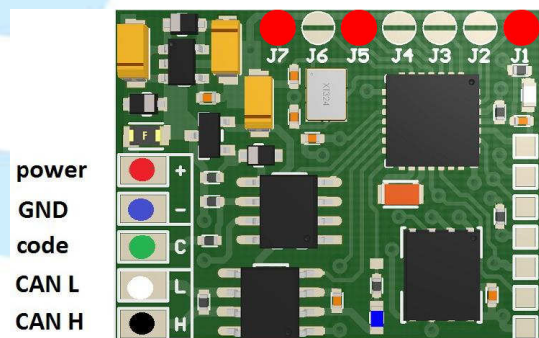


## Mercedes

**→ Only the version V5.3**

- E-class W211 from 2003 to 2007 (only BOSCH)
- C-class W203 form 2006 to 2007
- CLS W219 from 2005 to 2010
- CLK W209 from 2006 to 2009
- S-class W220 from 2002 to 2005
- S-class W221 model 2006 only

**Close Jumper J7 + J5 + J1**

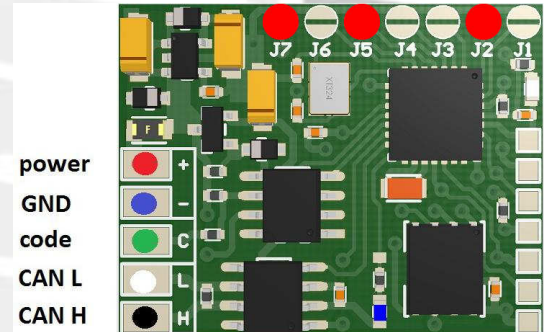


**Mercedes**

**→ Only the version V5.3**

- E-class W211 from 2003
- Only Airbag ECUs = Temic 002 820 35 26
- Only Airbag ECUs = Bosch 002 820 29 26
- Only Airbag ECUs = Bosch 0 285 001 441

**Close Jumper J7 + J5 + J2**



## Installing the emulator

This emulator can be use only for testing purposes, to verify the accuracy of Airbag system.

This emulator can't remain in your car instead replace on a new passenger seat occupation detection.

The emulator connect to a plug under the passenger seat, instead of original seat occupant detector.

There are 3 cables:

**+12V ACC**

**GROUND**

**DIGITAL SIGNAL**

Before connecting emulator use multimeter to check signals on pins in a plug!

**Warning!!!**

**This emulator can be use only for testing purposes,  
to verify the accuracy of Air Bag system.**

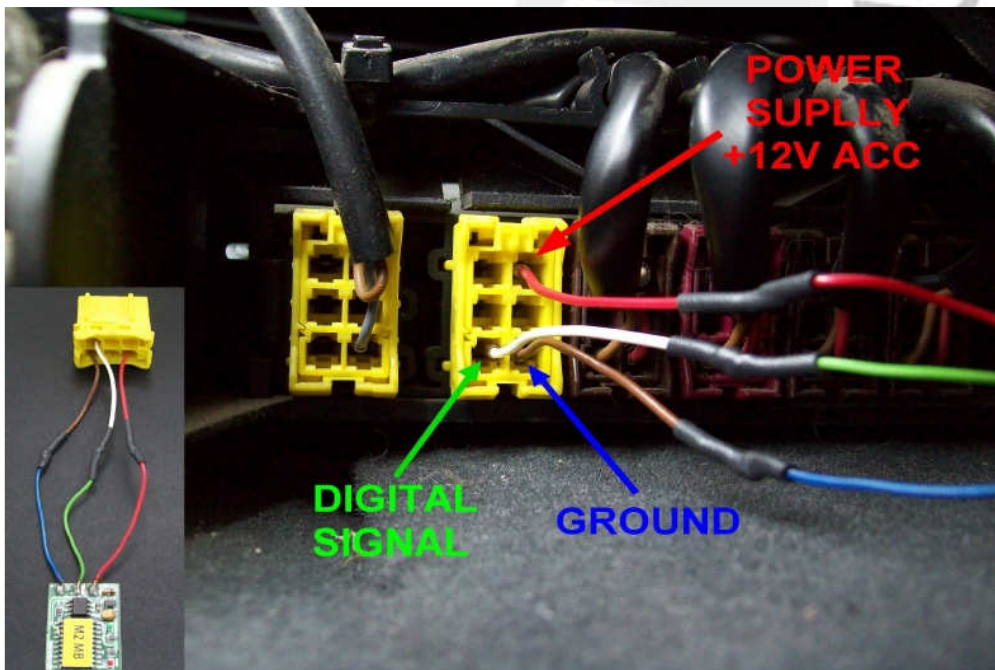


## Types of emulator – passenger seat occupant detector:

### Mercedes

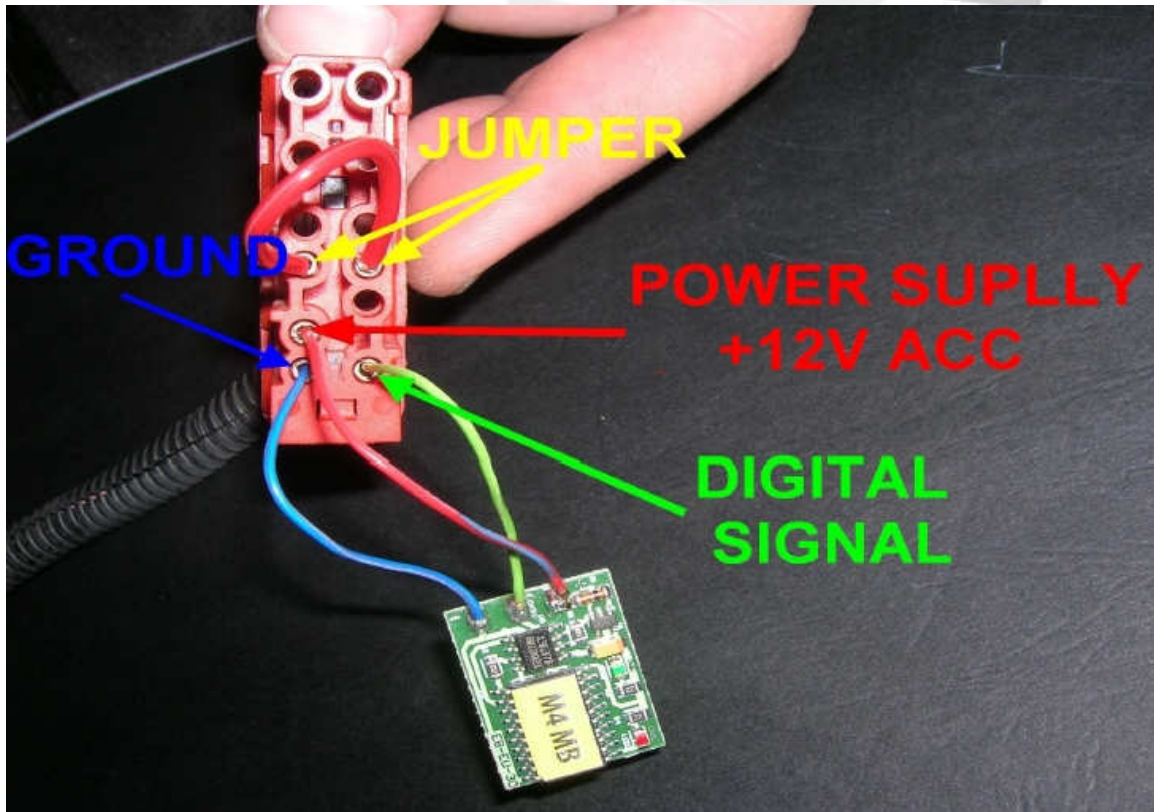
- E-class W211 (2002-2004 year) with controller **airbag Temic**,
- S-class W220 (2003-2005 year)

without installed child restraint



## Mercedes

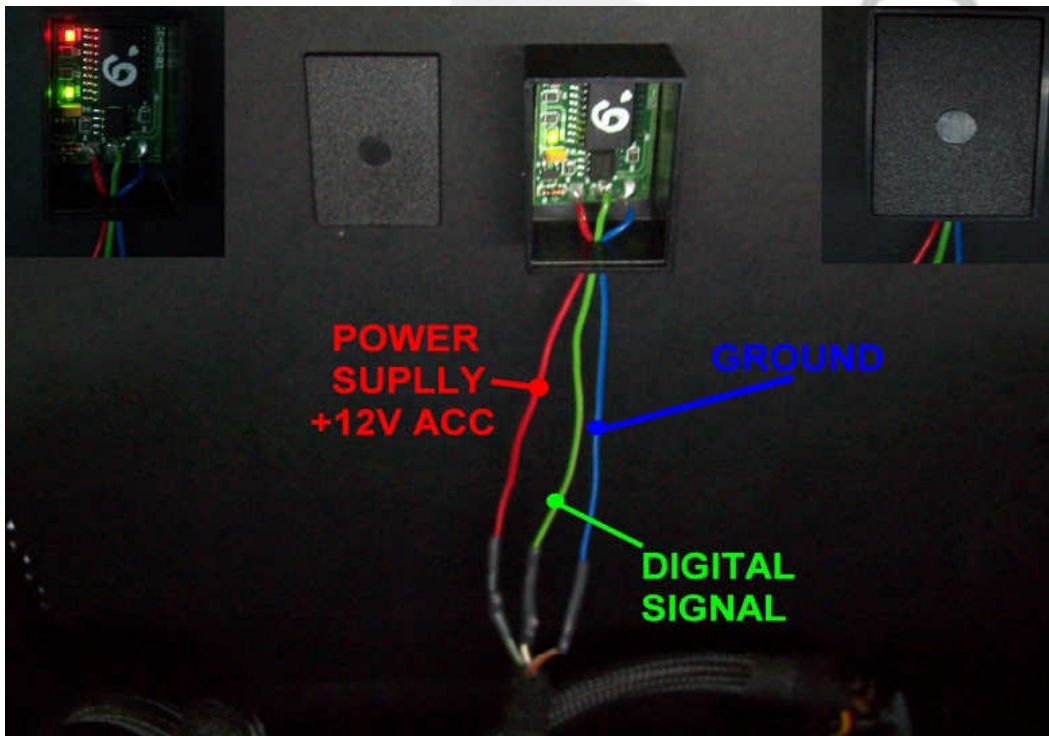
- A-class W168 (1997-2001 year)
- C-class W202 (1999-2001 year),
- VitoW638 to 2003 year,
- ML with controller airbag TRW 1999 year,
- E W210 to 1999 year, before lifting indicator airbag Off



**After correctly connecting the emulator, error SRS/AIRBAG on instrument cluster goes off, without necessity of deleting code of flaws.**

**Mercedes**

- W210 (2000-2003 year) with indicator Airbag Off
- E-class,
- Vito W639 (2002-2005 year),
- ML W163 as of 2000 year,
- A-class W168 (2002-2005 year)
- S-class W220 (2000-2003 year),
- C-class W203 to 2005 year,
- CLK W209,
- Vaneo



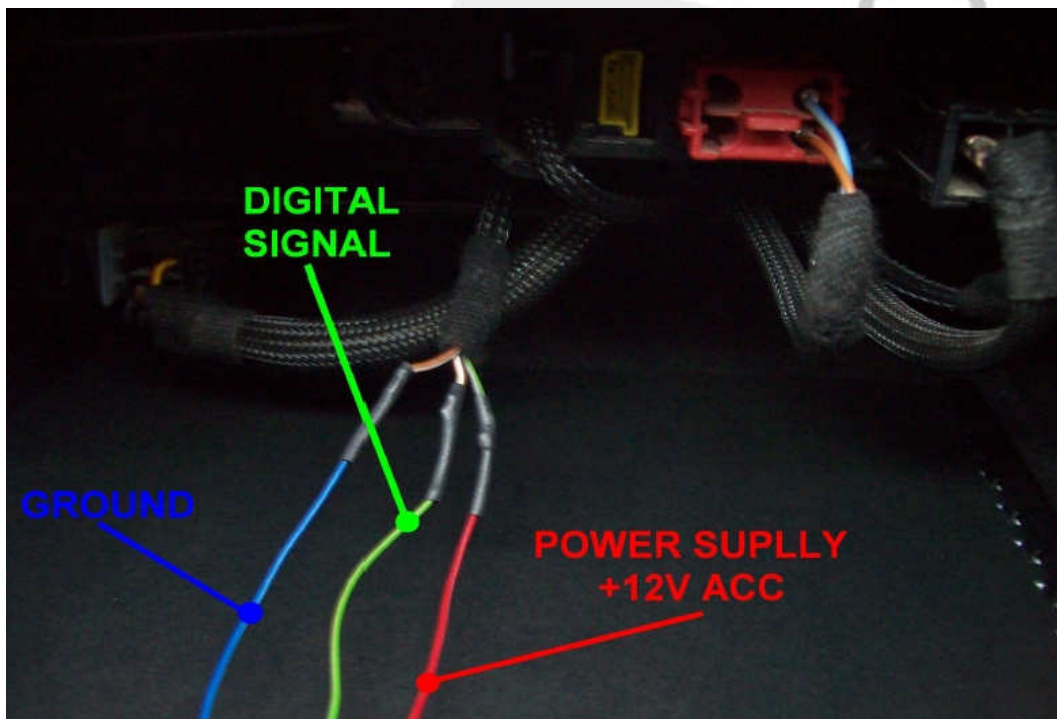
**BMW**

Europe as of 1997 to 2007 year

- E31, E36, E39, E39
- E46
- E53

Models form 2003 to 2007

- E60, E63, E65
- E87, E90



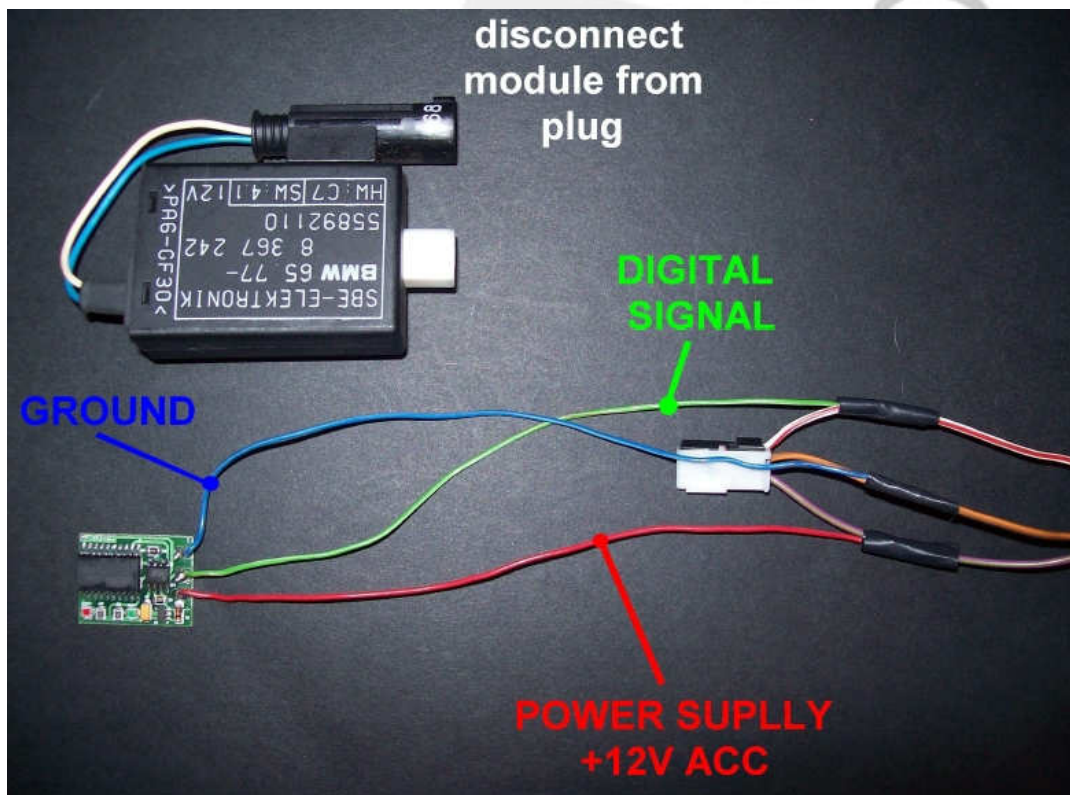
**BMW**

Europe as of 1997 to 2007 year

- E31, E36, E39, E39
- E46
- E53

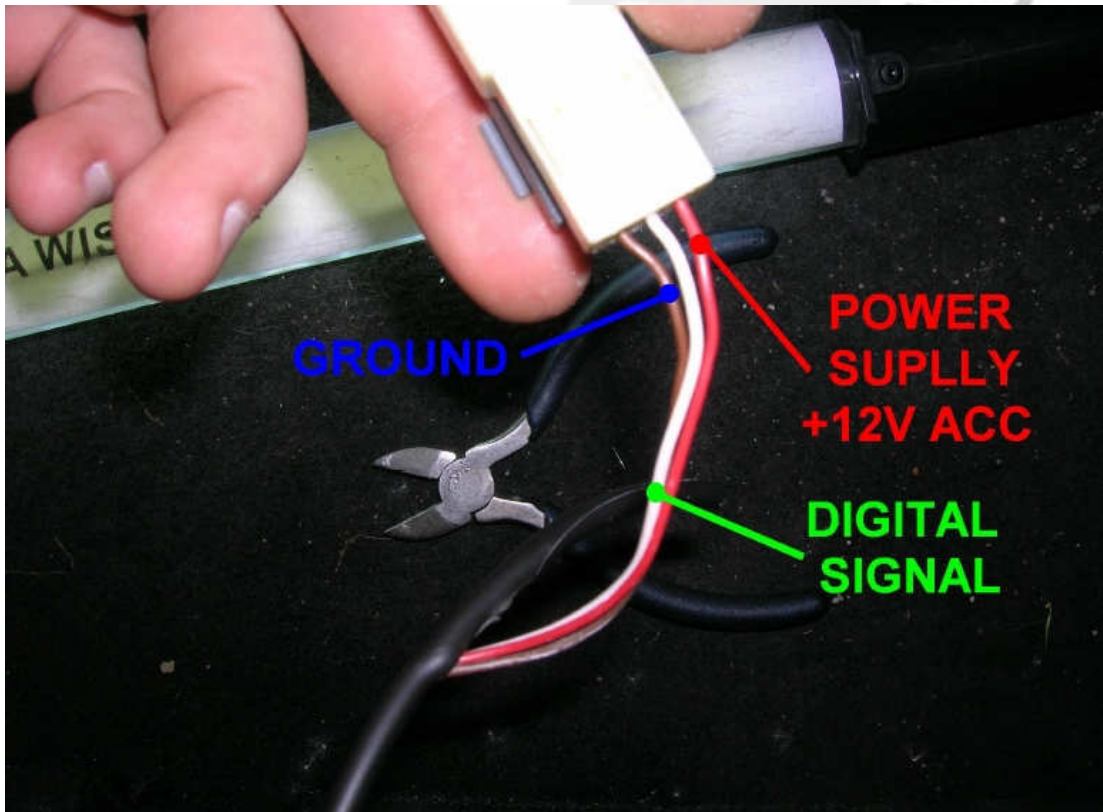
Models form 2003 to 2007

- E60, E63, E65
- E87, E90



**Mazda**

- Premacy,
- MX-5,
- 626,
- 323,
- 6



**Fiat**

– Stilo

