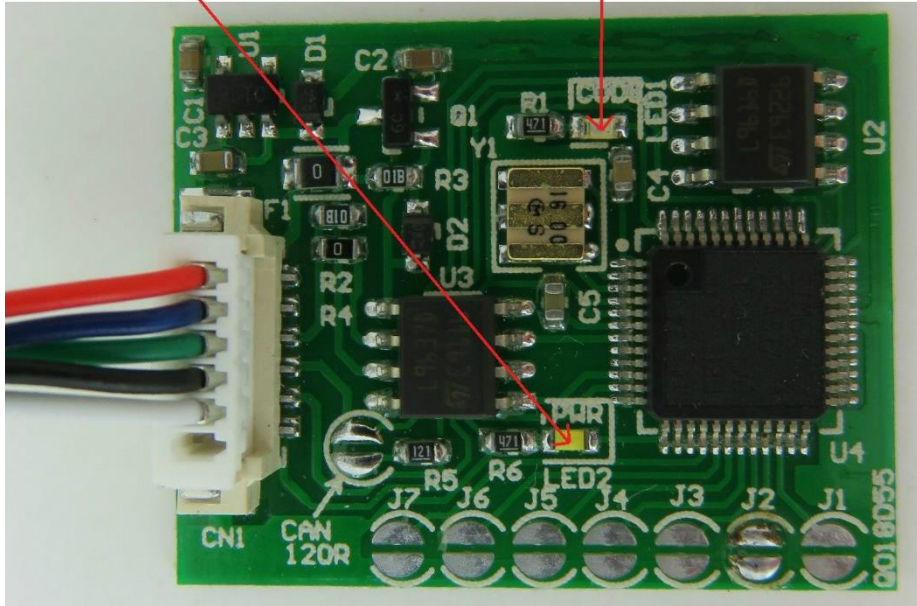


Fiat without CAN Emulator

Red Cable: +12V **Blue Cable: GND**
Green Cable: CODE **Black Cable: CAN-H**
White Cable: CAN-L

LED-- Power

LED-- After adjusting,
It lights up constantly,
and blink every two seconds



Fiat without CAN Emulator

In Universal IMMO Emulator, solder jumpers J4

USE

Fiat, Citroen, Peugeot diesel

2-socket ECU

Alfa, Fiat, Lancia

1.9 Jtd 2.4 Jtd 5-socket ECU

IAW49F

Fiat Bravo 1.6 16V

IAW 4AF

Fiat Seicento, Panda 1.1 8V

Lancia Kappa 2.0i 16V Turbo

0 261 203 792

Lancia Kappa 2.0i 20V

0 261 203 670

Lancia Kappa 2.4i 16V

0 261 203 669

Lancia Kappa 3.0i 24V

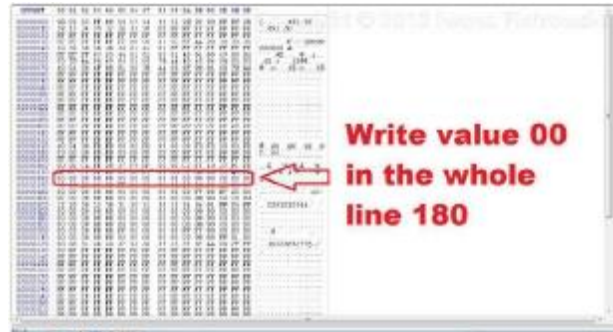
0 261 203 482

Fiat, Citroen, Peugeot diesel

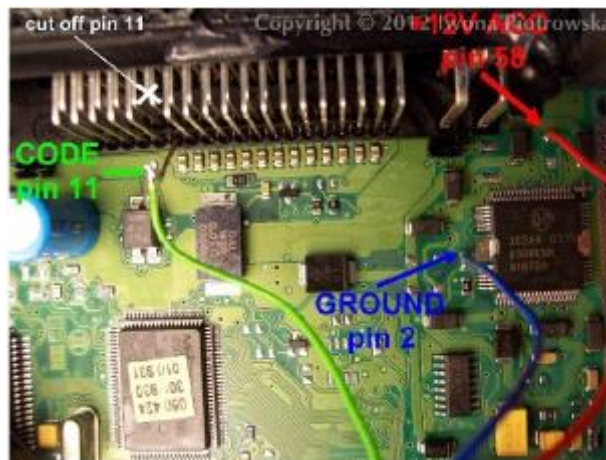
2-socket ECU



After modifying **5P08C3** memory in line **180** into **00** values, connect emulator in place of the original immobiliser



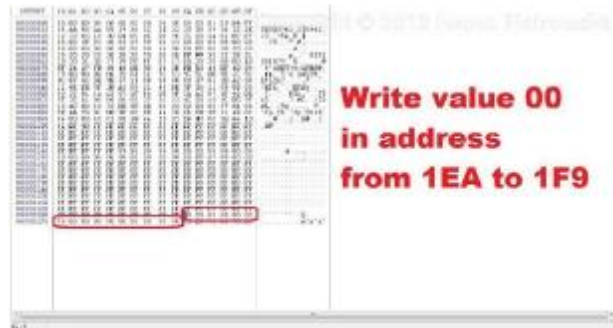
Connecting emulator to ECU



Alfa, Lancia, Fiat 1.9 Jtd 2.4 Jtd 5-socket ECU



In addresses from 1EA to 1F9, change these values into 00 in 24C04 memory



Connecting emulator to ECU



ACC	B.13 pin
GND	A.4 A.5 A.6 pin
Code	C.13 pin (cut off)

ATTENTION!

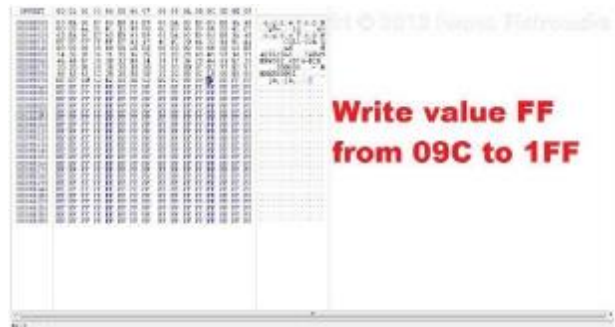
When putting ECU back together, put a piece of cardboard on the wire making sure not to tighten it firmly in this area. Alternatively, break off a piece of clamp holder and drag the cable over to the other side.



IAW49F

Fiat Bravo 1.6 16V

Find memory **95040** in ECU
and then program it according to picture
below



Connecting emulator to ECU

Cut off pin 13 from wiring in the car !!!

Lancia Kappa 2.0i 16V Turbo

0 261 203 792



ACC	37 or 27 pin
GND	14, 19, 24 pin
Code	55 pin



Connect immo line to **pin 55**.
Disconnect immo. Connect **A6** and **A5**
together.

**have diagnosis, the immo line must
be made in the reset button.**

This device self-learns ECU code

Lancia Kappa 2.0i 20V

0 261 203 670



ACC	37 or 27 pin
GND	2, 14, 19, 24 pin
Code	55 pin

To have diagnosis, the immo line must be made in the reset button.
Connect A6 and A5 together.

This device self-learns ECU code

Lancia Kappa 2.4i 16V

0 261 203 669



Connect immo line to **pin 55**. Disconnect immo. Connect **A6** and **A5** together.

To have diagnosis, the immo line must be made in the reset button.



This device self-learns ECU code

Lancia Kappa 3.0i 24V

0 261 203 482



Connecting emulator to ECU



Warning!!!

Due to possible construction changes of cars, check signals with multimeter in the ECU plug.