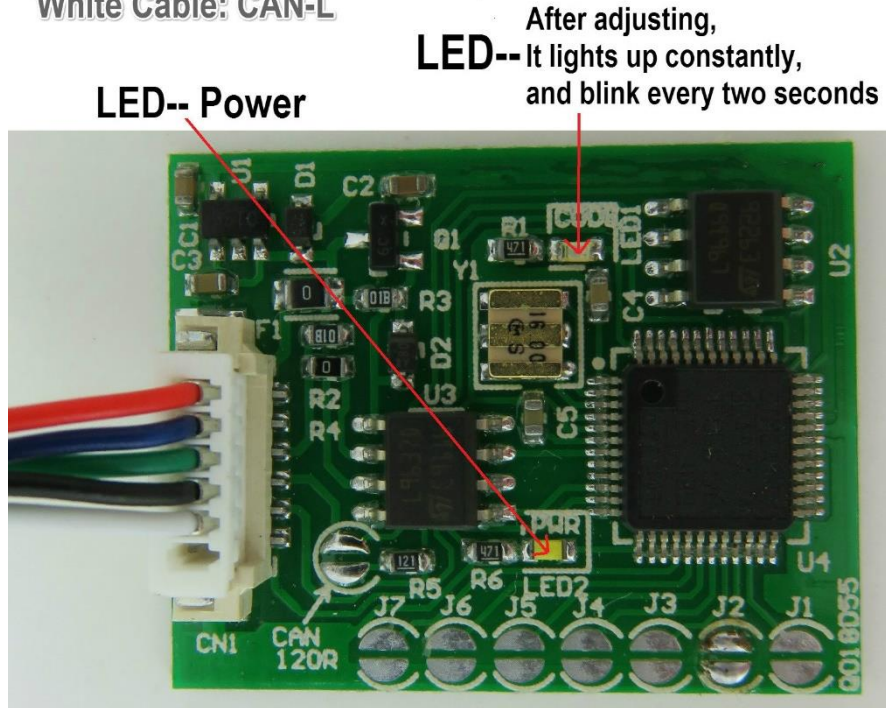


# Daewoo 1

**Red Cable: +12V**      **Blue Cable: GND**  
**Green Cable: CODE**    **Black Cable: CAN-H**  
**White Cable: CAN-L**



## DAEWOO 1

In Universal IMMO Emulator, solder jumpers **J1, J2 and J3**

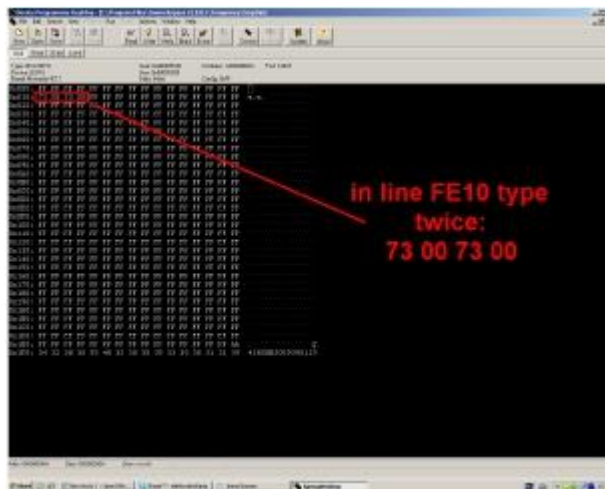
## USE

ECUs with white - red sockets and ECUs with blue sockets

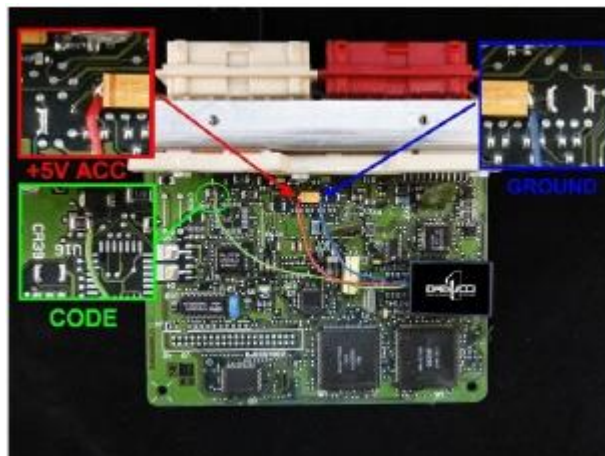
ECU with white – red socket



This emulator requires modification of **Motorola HC11F1** processor located in ECU.



In address **10**, write value **73 00 73 00** twice



Once you modified Motorola, connect emulator to the ECU as pictured.

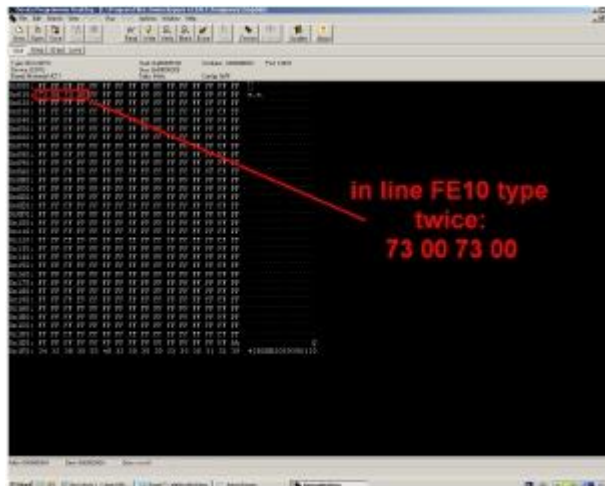
**Before connecting the emulator, it must be precisely insulated with insulation tape and the original immobiliser must be disconnected!!!**

In case of problems with starting the car, disconnect power supply (+12V) in ECU and connect +12V ACC in place of power supply.

ECU with blue socket



This emulator requires modification of **Motorola HC11F1** processor located in ECU



In address 10, write value 73 00 73 00 twice  
Once you modified Motorola, connect emulator to the ECU as pictured.

|         |                           |
|---------|---------------------------|
| +5V VCC | leg 11 of DELCO 9621 unit |
| GND     | GND of resonator (quartz) |
| Code    | leg 1 of DELCO 9621 unit  |

**Disconnect immo or cut off pin B7 from ECU**

**Before connecting the emulator, it must be precisely insulated with insulation tape and the original immobiliser must be disconnected!!!**

In case of problems with starting the car, **disconnect power supply (+12V) in ECU** and connect +12V ACC in place of power supply.

**Warning!!!**  
**Due to possible construction changes of cars, check signals with multimeter in the ECU plug.**